



## SITE RESOURCE PACKET

# LITTLE HOUSE OF GLENCOE



A green leaf-shaped graphic containing the word "WELCOME" in white capital letters.

WELCOME

## WELCOME TO BACKYARD NATURE CENTER'S SITE RESOURCE PACKETS!

BackYard Nature Center (BYNC) has selected and described six nature sites in New Trier Township that represent the diversity of the Township's open spaces. It is our hope that these Resource Packets serve as your roadmap to discovery as you explore and enjoy the various parks, managed natural lands, and forest preserves.

BYNC's mission is to connect children and adults, individuals and groups, with the joys and wonders of nature. We believe this connection benefits both the natural world and the lives of the participants.

### **This Site Resource Packet offers:**

- Road map to Little House of Glencoe
- Site map with highlighted areas of interest
- Physical features, e.g., cabin, fire rings, nature trails
- Ecological and biological features, e.g., meadows, wetlands
- Questions and comments, accompanied with photos, regarding the Little House site, are included in the "Areas of Interests" section to encourage discussion and possible uses for Little House, as a meeting place or event venue.

Please let us know how we can make your encounter with nature more meaningful. Contact us for more information and give us your comments about your experience. BYNC looks forward to hearing from you!

BackYard Nature Center: <http://backyardnaturecenter.org>  
[BYNC@backyardnaturecenter.org](mailto:BYNC@backyardnaturecenter.org)

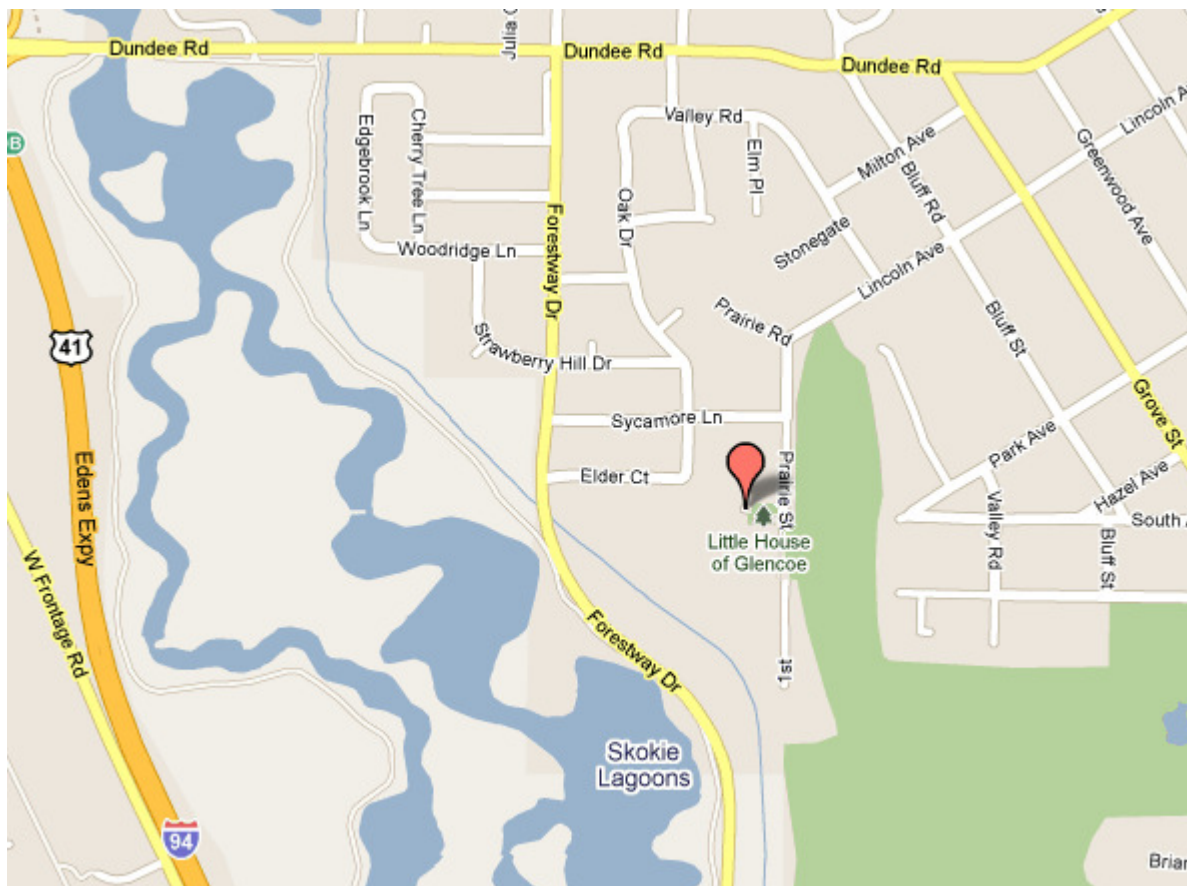
Little House of Glencoe: <http://www.littlehouseofglencoe.org>  
[Info@LittleHouseofGlencoe.org](mailto:Info@LittleHouseofGlencoe.org)  
690 Birch Road, Glencoe, IL


# ROAD MAP

## LITTLE HOUSE OF GLENCOE

### ROAD MAP TO SITE

The Little House of Glencoe is located at 690 Birch Lane, Glencoe, Illinois, 60022 just east of the Edens Expressway (I-94) and right off of Prairie Street. The area just east of Prairie Street is occupied by Skokie Country Club. Parking is available along Birch Lane, and on the shoulder of Prairie Street.



 690 Birch Lane, Glencoe, Illinois

## HISTORY

### HISTORY OF THE LITTLE HOUSE OF GLENCOE

Little House of Glencoe was founded by Glencoe Girl Scout leaders who wanted a safe, comfortable, convenient place for their Girl Scouts to earn badges, practice camping skills, and have overnights. The scout leaders selected a wooded piece of land on Glencoe's boarder with the Cook County Forest Preserve, and arranged permission to build a cabin. Fundraising began in 1945, and Little House opened its doors for its first function in 1949. Shortly afterwards the scouts made the space available to other community groups at reasonable rates.

In its 60 years of operation, Little House has been a popular place not just for scouts and badge work, but for family gatherings, community parties, outdoor trainings, club meetings, and youth group overnights. It has hosted Glencoe Girl Scout day camps for more than 30 summers. The facility is a charming cabin with modern plumbing, a full kitchen, a small stage, a screened-in porch and indoor and outdoor fireplaces. Many have fond memories of attending a party or summer camp at Little House of Glencoe.

Little House ownership passed from the Girl Scouts to an independent non-profit organization in the mid-1960s. While about two-thirds of its budget comes from facility rentals, the Little House organization is dependent on private donations to keep the lights on and the doors open. Little House accepts bookings from all over the Chicagoland area, and has discounted rates for youth organizations.

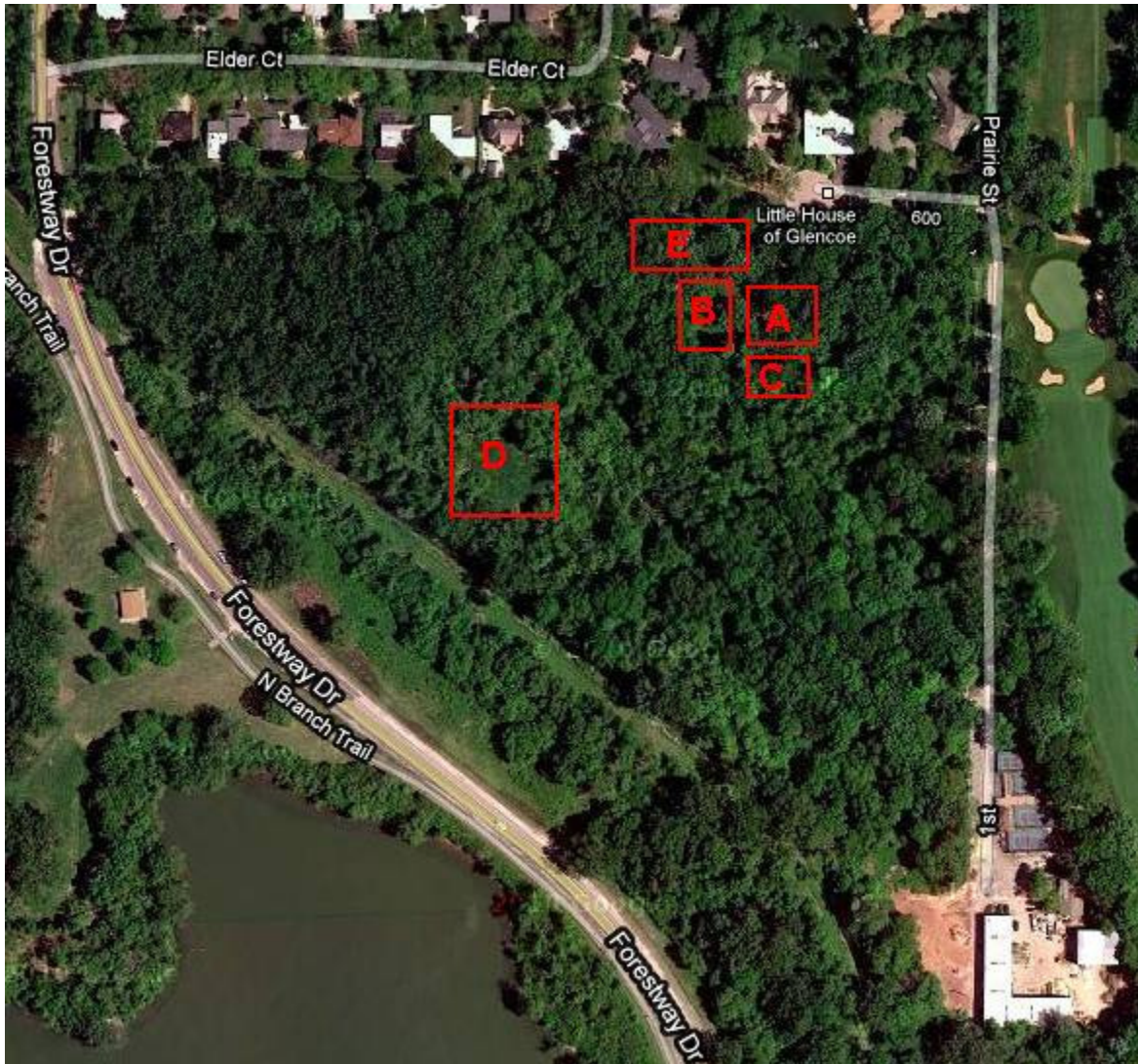
Located at 690 Birch Lane, Glencoe, Illinois, Little House of Glencoe is a "one of a kind" local treasure, located in the Forest Preserve District of Cook County's "Skokie Lagoons." Run by a volunteer board that meets on the first Tuesday of each month, Little House's Mission is to provide a unique meeting place in a natural setting.



The Little House of Glencoe is available by reservation only. For more information, or to book an event, please visit the Little House of Glencoe online at: [www.littlehouseofglencoe.org/home](http://www.littlehouseofglencoe.org/home)

AREAS  
OF INTEREST

LITTLE HOUSE OF GLENCOE



Featured Areas

- A** Little House Cabin
- B** Campgrounds
- C** Fire Rings/Fire Pits
- D** Open Meadow
- B, C, E** Restoration area

## AREAS OF INTEREST

### LITTLE HOUSE OF GLENCOE

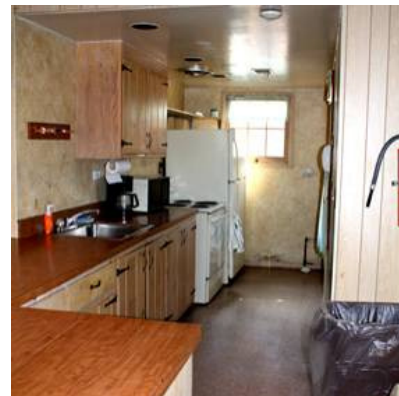
The Little House property is bounded by Forestway Drive on the south and west, and the tree-line extending west of Birch Lane marks the northern boundary. The eastern boundary of the site is marked by Prairie Street.



Ample parking is available in on Birch Lane or anywhere along Prairie Street. There is a shaded walking path behind the Little House Cabin that loops around the southern half of the property.

#### Area A: Little House Cabin

The cabin is located just to the south of Birch Lane. It includes a full kitchen, bathroom, heat and air conditioning, 2 wood-burning fireplaces, an indoor patio, and comfortable seating for large groups. Watch children explore the cabin; it's rich history and amenities are sure to be a crowd pleaser.



## AREAS OF INTEREST

### Area B: Campgrounds

The area just west of the Little House cabin is the perfect spot to pitch a tent. Groups are encouraged to use the grounds as well as the cabin when visiting Little House.



### Area C: Fire Rings/Fire Pits

The fire ring is located just west of the Little House cabin. Toasting marshmallows, telling stories, or just passing the time, have a seat near the fire pit, it'll be sure to warm you up. Bring a good ghost story!

### Area D: Open Meadow

In the summertime, Area D is lush with green vegetation and a large open area just off the walking path. In the center stands a worn totem pole which may have been left behind by a group of girl scouts in earlier times. The open meadow is the perfect place to bring large groups when planning outdoor activities.



## AREAS OF INTEREST

### Area E: Restoration Area

The land west of the parking area and southwest of Little House is the site of Boy Scout's volunteer restoration efforts. The land was once choked with European buckthorn, an invasive shrub which establishes dense thickets, crowding out native plants. This area has since been much improved. Currently, the land which perimeters the bike trail and the residential boundary is under restoration.



### Signs of Wildlife

Keep a lookout for signs of wildlife in the area; you may be surprised what you might find. This area is a great habitat for both resident and migratory birds. At times larger animals may also be seen pruning the understory. As you will notice from the photo, tracking is especially good after it rains.

### Plant Diversity

Here are some of the many plant species you may encounter along the walking path or near the stream. Be sure to bring your camera!







AREAS  
OF INTEREST

## LITTLE HOUSE OF GLENCOE

### SUMMARY

#### **Access**

On-site parking/roadside parking (room for buses, up to 25 cars)

#### **General Features**

Little House Cabin – kitchen, bathroom, fireplace (fees apply)

Designated tent area – fire rings

Bike path / walking path

Access to Skokie Lagoons North

Restoration Area

Open space

#### **Recreational Features**

Cross-Country Skiing / Snowshoeing

Overnight Stays (fees apply)

Nature Walks

Birding

#### **Ecological Features**

Meadows

Wetlands

Native oak savanna

Wildlife sightings